



DIVISION 20A EXHIBITOR'S HANDBOOK

Welcome to the world of Competitive Exhibits! As an exhibitor at the fair, you are entering into a long standing tradition of education & competition that began in the Tanana Valley in 1924.

Your primary source of information about entering an exhibit is through the Exhibitors Guide, available online or at the Fair Office. This handbook will provide you with some additional information as well as judging criteria and sample judging sheets.

Superintendent:

Please contact the Fair Office at 451-5553.

ENTRY RULES

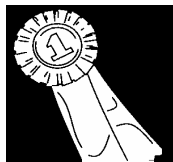
- **Get your Fair I.D. number & exhibit tags** from the Exhibit Office. Fill out Exhibit Tags before you arrive on entry day.
- **Pick your Best:** You may enter only one exhibit per lot.
- **Know your entry & pick-up days.**
- **Prepare your entry:** Read the paragraph on preparation & presentation and present your exhibit in the best way possible.
- **Tell us about your entry:** If a class has special instructions, be sure to include this information on a 3"x5" card attached to your entry.

ENTRY GUIDELINES

Pick your Best: You may enter only one exhibit per lot, so choose that item which best demonstrates your skill or knowledge.

Prepare your entry: Read the paragraph on preparation & presentation and present your exhibit in the best way possible. Don't wait until the last minute - know what you will enter & have your exhibit tags ready well before entry day.

Tell us about your entry: If your division has special instructions, be sure to include this information on a 3"x5" card attached to your entry.



PREPARING YOUR ENTRY

Your exhibit must be entered in the grade level you were in when the work was completed. You must state on the exhibit tag your age at the time the work was done. Choose the best of the work you completed this past school year.

Classes AA - GG are junior classes open to exhibitors in Preschool through Twelfth grades.

Class A is for adults, open to educators and others interested in education.

JUDGING AT THE FAIR

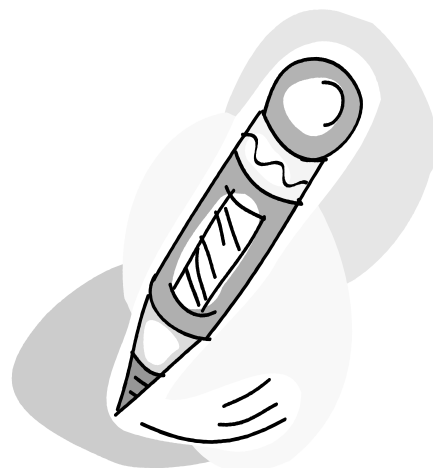
Judging at the Tanana Valley State Fair is accomplished through a network of volunteers. Judges are recruited & chosen for their expertise in a particular area, and it is through their generous donation of time & knowledge that we are able to showcase your achievements. Judges are trained by the superintendent & through the Fair Office to follow the guidelines set down by the Fair Association.

They are expected to:

- be fair & consistent in their judging;
- provide positive comments & constructive criticism to the exhibitor;
- follow the Fair Association's mission to educate participants through their evaluation.

Each exhibit must have a completed score sheet. These score sheets are for the education of the exhibitor only & are not for public view.

An exhibitor may request to see a score sheet for any of their entries by asking the exhibit attendant on duty, asking the superintendent, or requesting assistance through the Fair Office.



JUDGING CRITERIA

Judging in this division is based on the following:

Preparation (neatness and appearance)

Accuracy & correctness (following directions)

Creativity (originality, design, layout, adaptation).

Quality (appropriateness for grade level, adherence to theme, organization, fitting length, use of visuals)

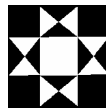
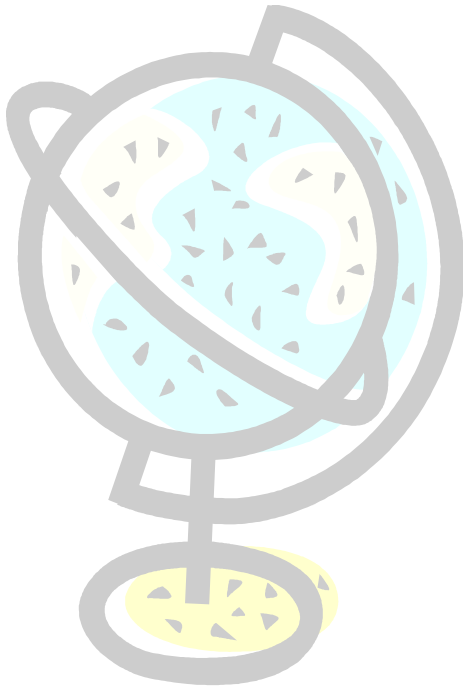
Please note: no artwork is accepted; please enter artwork into Division 13B, Junior Art Show.

See the sample judging sheet.



SAMPLE JUDGING SHEET

Division 20A Education Showcase	
Exhibit Tag # _____	ID # _____
Class _____	Lot _____
Judge's Initials _____	
	POINTS POSSIBLE SCORE
PREPARATION	20
ACCURACY	15
QUALITY	50
CREATIVITY	15
TOTAL	(100 = perfect score)
COMMENTS _____	



Tanana Valley State Fair Association
1800 College Rd, Fairbanks, AK 99709-4173
451-5553/452-3750
www.tananaValleyFair.org

SECURITY

You are encouraged to enter your best work. The Competitive Exhibits team (staff, superintendents, judges & volunteers) recognize the value these hold & all effort is made to provide for their security.

Each building has a team of volunteers to watch over the exhibits & to make sure they are not handled or stolen, but because of the volume of entries we get each year, we cannot guarantee the safety of each exhibit.



QUESTIONS

We have tried to create a lot for everything, but if you cannot find an appropriate lot in which to enter an item, please contact the Division Superintendent. They can help you in selecting a lot, or can add any lots as needed. Be sure to contact them before Entry Day.

If you are unable to reach the superintendent, the Fair Office is here to help. Call us anytime between the hours of 9 am & 5 pm, Monday through Friday or e-mail ozzie@tananaValleyFair.org